

BREWERY CATALOG

March 2006

GW KENT

3667 Morgan Road, Ann Arbor, Michigan 48108

Tel 734.572.1300 Fax 734.572.0097

Toll-free tel 1.800.333.4288

Toll-free fax 1.800.500.7505

www.gwkent.com

email: info@gwkent.com

Terms & Prices:

Upon credit approval, our terms are net 10 days from date of invoice. We accept Visa, Mastercard, American Express & Discover. Minimum order of \$50.00 is required. All prices are FOB Ann Arbor, Michigan.

Prices are subject to change without notice, due to fluctuation in currencies, commodity prices and manufacturers cost increases.

Quotation available upon request.

Business Hours:

Monday - Friday 9 am - 5 pm (Eastern Time)

Order online: www.gwkent.com

secure site with quick order form

Shipping:

We use UPS service and common carrier trucking. We will determine carriers based on trucking requirement, price and commodities. All UPS charges are prepaid and billed on your invoice. Common carrier charges will be prepaid or collect. We pass all common carriers' discounts to customers and help coordinate a smooth journey for your freight.

Damage or Loss Claims:

Be sure you receive the same number of cartons as stated on the freight bill before you sign for it. *Any discrepancy or damages must be noted on freight bill* and signed by driver at the time of delivery so trucking company will honor the claim. We will not be responsible for any damage or loss if a freight bill does not note damages or shortage with signature from driver.

Returns:

No returns without authorization. Merchandise must be less than 30 days old from date of invoice. Returned merchandise subject to 25% re-stocking charge. Machinery, tanks, pumps and barrels are subject to manufacturer's warranty and repair policy, we can not accept returns for above mentioned products.

Customer Pick Up:

Please allow 24 hours to 48 hours of order processing time for pick up at our Ann Arbor warehouse.

Table of Contents

Additives	5
Barrel Accessories	14
Bins	13
Brewhouse	10
CIP Spray Balls	26
Carbonation System	27
Champagne Corker	14
Chiller	39
Cleaning Tools	18
Distilling	43
Filler	13
Filters & Filter Media	35 - 38
Fittings	20 - 32
Hops	5
Hose	33 -34
Hydrometers	42
Kegs	11 - 12
Keg Cleaning & Filling	11
Labeling Machines	40 -41
Malts	3 - 4
Manway Doors	29
Pumps	15
Refractometers	17
Thermometers	17 - 18
Test Instruments	15 - 17
Valves	19 - 20



Malt for the Best from Germany

A question of taste. The best ingredients for the best beer. Durst malt has been a tradition for the past 175 years. Stringent quality control, generations of know-how and state of the art malting equipment. Durst malt satisfies breweries all over the world. Available in 55 lb. bags, supersacks 1925 lb., or bulk delivered into brewery's silo.

Durst Malt Analysis

Typical Analysis	Moisture %	Extract %	Color in EBC	Protein %	Soluble Nitrogen	Kolbach Index	Hartong Index	pH	Friability	Glassy Kernels	Betaglucan mg/l.	Diastatic Power	Attenuation
Pilsner Malt	4	83 - 84	3.4	10	0.67	44	40	5.8	82	<3 >145	194	275	82
Turbo-Pilsner Malt	4	82 - 83	3.8	10	0.71	47	44	5.8	85	<3 >150	108	289	83
Munich 20 EBC	3.6	81 - 82	20.0	10	0.72	43	44	5.6	76	<3 >150	220	221	80
Munich 40 EBC	3.6	81 - 82	40.0	10	0.74	44	45	5.4	77	<3 >150	186	195	80
Turbo-Munich	4	82 - 83	20/40	10	0.76	48	52	5.4	78	<3 >150	166	241	82
Vienna Malt	4	82 - 83	9.0	10	0.7	44	43	5.5	83	<3 >150	141	282	82
Turbo-Vienna Malt	4	82 - 83	7.0	10	0.74	48	45	5.6	85	<3 >150	123	276	82
Pale Ale Malt	3.5	82 - 83	6.5	10	0.66	44	42	5.8	82	<3 >150	180	212	82
Wheat Malt	4	82 - 86	3.5	11	0.75	40	37	5.9					
Unmalted Wheat	5	82 - 83	4	12	0.78	42	36	6					
Crystal-Pils Malt	5.5	82 - 83	4.0										
Crystal 40 EBC	5.5	75 - 77	40.0										
Crystal 120 EBC	5.5	75 - 77	120.0										
Crystal 200 EBC	5	75 - 77	200.0										
Melanoidin Malt	4	75 - 77	70 - 80										
Acidulated Malt	7	75 - 77	5 - 7										
Smoked Malt	4	75 - 77	5 - 7										
Rye Malt	5	85	4 - 5										



Catalog	Whole Kernel	55 lb. bag	10,000 lb. + 55 lb. bag	1925 lb. Supersack
#5250B	Pilsner Malt	\$22.50	\$21.50	\$0.33/lb
#5249B	Pale Ale Malt	\$22.50	\$21.50	\$0.33 /lb
#5251B	Munich Malt 20 EBC	\$22.50	\$21.50	\$0.33 /lb
#5257B	Munich Malt 40 EBC	\$22.50	\$21.50	\$0.33 /lb
#5252B	Vienna Malt	\$22.50	\$21.50	\$0.33 /lb
#5247B	Crystal-Pils Malt	\$27.50	\$26.50	
#5253B	Crystal Malt 40 EBC	\$27.50	\$26.50	
#5254B	Crystal Malt 120 EBC	\$27.50	\$26.50	
#5256B	Crystal Malt 200 EBC	\$27.50	\$26.50	
#5255B	Wheat Malt	\$22.50	\$21.50	
#5244	Unmalted Wheat	\$22.50	\$21.50	
#5241	Melanoidin Malt	\$27.50	\$26.50	
#5240B	Acidulated Malt	\$27.50	\$26.50	
#5243	Rye Malt	\$27.50	\$26.50	
#5242	Smoked Malt	\$27.50	\$26.50	
#5400	Turbo-Pilsner	\$22.50	\$21.50	\$0.33 /lb
#5401	Turbo Munich 20 EBC	\$22.50	\$21.50	\$0.33 /lb
#5402	Turbo Munich 40 EBC	\$22.50	\$21.50	\$0.33 /lb
#5403	Turbo Vienna	\$22.50	\$21.50	\$0.33 /lb

Preground Durst Malt

Catalog		55 lb. bag
#5291	Pilsner	\$26.50
#5290	Pale Ale	\$26.50
#5292	Munich 20 EBC	\$26.50
#5293	Munich 40 EBC	\$26.50
#5294	Vienna	\$26.50
#5295	Wheat Malt	\$26.50



Preground Malt

Catalog	Whole Kernel Malt	55 lb. sack
#5520	Crisp Pale Ale Malt	\$24.75
#5521	Crisp Maris Otter Pale Malt	\$25.75
#5522	Crisp Cara Malt	\$30.50
#5523	Crisp 40 L. Crystal Malt	\$30.50
#5524	Crisp 80 L. Crystal Malt	\$30.50
#5525	Crisp Chocolate Malt	\$30.50
#5526	Crisp Black Malt	\$30.50
#5527	Crisp Roasted Barley	\$30.50
#5528	Crisp Brown Malt	\$30.50

Catalog		50 lb. bag
#5269	Preground 2-row Brewer's Malt	\$22.50
#5265	Preground Pilsner Malt	\$25.00
#5270	Preground Pale Ale Malt	\$25.00
#5271	Preground Munich Malt 10 L.	\$25.00
#5267	Preground Munich Malt 20 L.	\$25.00
#5272	Preground Vienna Malt	\$25.00
#5273	Preground Victory Malt	\$33.00
#5274	Preground Carapils Malt	\$31.00
#5280	Preground Caramel 20 L.	\$29.00
#5275	Preground Caramel 40 L.	\$29.00
#5284	Preground Caramel 60 L.	\$29.00
#5281	Preground Caramel 80 L.	\$29.00
#5276	Preground Chocolate Malt	\$37.00
#5277	Preground Black Malt	\$37.00
#5278	Preground Roasted Barley	\$37.00
#5279	Preground Wheat Malt (Red)	\$29.00
#5285	Preground Special Roast	\$37.00

Malt Analysis	Moisture	FGE (dry)	Color
Pale Ale Malt	2.5%	82.5%	3.4 L
Maris Otter Malt	2.5%	82.5%	4.2 L
Cara Malt	6.0%	76.0%	17.0 L
45 L Crystal Malt	3.2%	76.0%	45.0 L
77 L Crystal Malt	3.2%	76.0%	77.0 L
Chocolate Malt	3.5%	77.0%	630.0 L
Black Malt	3.0%	75.5%	680.0 L
Roasted Barley	3.0%	76.5%	690.0 L
Brown Malt	3.0%	76.5%	65.0 L

Whole Kernel Malt

Catalog		50 lb. bag
#5214B	Briess 2-row Brewer's Malt	\$20.00
#5215B	Briess Pale Ale Malt	\$21.50
#5208B	Briess Carapils	\$25.50
#5210B	Briess Roasted Barley	\$30.00
#5216B	Briess Victory Malt	\$28.50
#5217B	Briess Special Roast	\$28.50
#5218B	Briess Black Malt	\$30.00
#5219B	Briess Chocolate Malt	\$30.00
#5229B	Briess Torrefied Wheat	\$22.00

Briess Liquid Malt Extract

Catalog		33 lb. Jar
#5141	Briess Brewers Gold	\$33.00
#5142	Briess Sparkling Amber	\$33.00
#5144	Briess Bavarian Weizen	\$33.00

BriessDried Malt Extract

Catalog		50 lb. bag
#519-1	Briess Dried Brewers Gold 50 lb.	\$109.95

Adjuncts

		25 lb. bag
#5222B	Briess Flaked Barley	\$11.50
#5223B	Briess Flaked Yellow Corn	\$12.50
#5224B	Briess Flaked Oats	\$14.50
#5225B	Briess Flaked Rye	\$12.50
#5226B	Briess Flaked Wheat	\$11.50
#5227B	Briess Flaked Rice	\$15.50
#5228	Rice Hulls (50 lb. bag)	\$22.50

Additives & Finings

Aspera Coloring Beer A/E Made of pure malt according to the German Purity Law and receives additional filtration to enable the product to be added to beers at any stage of brewing process.

Catalog #5900 Price \$45.00 / 22 lb. container

Irish Moss Powder Carrageenan coagulant used in final 15 minutes of the boil to precipitate protein and improve formation of trub. Ideal for wort clarification and improved hot & cold breaks. Recommended addition is approximately 2 oz. per 10 barrels.

Catalog # 4519B Price \$7.50 per pound

Gelatin Low Bloom, hot water soluble beer clarifier used in cold conditioning vessels to remove chill-haze forming proteins. Recommended rate of usage is 31 grams to half gallon of cold water per barrel. Hydrate for 1 hour.

Catalog #4518B Price \$6.95 per pound

Isinglass Powder Clarification agent used in cold conditioning vessels that reacts with and precipitates yeast still in suspension. Good for cask-conditioned clarification and maturation. Approximate dosing rate is 2 to 2.5 oz per 10 barrels.

Catalog #4520B Price \$22.50 per pound

Gypsum Anhydrous Calcium Sulfate used to harden soft water. Typically used during the mash-in, may also be added to the hot liquor tank.

Catalog #4505B Price \$30.00 per 50 lb. bag

Calcium Chloride

Catalog #4508 Price \$30.00 per 50 lb. bag

Ascorbic Acid

Catalog #4529 Price \$5.95 per pound

Citric Acid

Catalog #4530B Price \$75.00 per 50 lb. bag

Dextrose Corn Sugar

Catalog #4550B Price \$19.50 per 50 lb. bag

Lactose Milk sugar is non-fermentable. This is used primarily in the production of “cream” or “milk” stouts to add extra body, mouthfeel and smoothness to the flavor profile.

Catalog #4507B Price \$60.00 per 50 lb. bag

Malto Dextrin Powder Used in root beer production in conjunction with granulated sugar to add body, mouthfeel and overall complexity.

Catalog #4541B Price \$50.00 per 50 lb. bag.



Hops

Premium quality hops from Europe and Washington, packed in 11 lb. foil bag to preserve freshness and aroma.

European Pelletized Hops		11 lb. bag
#4011B	German Hallertau Hersbrucker	\$5.50 /lb
#4052	German Hallertau Hallertau	\$7.00 /lb
#4051	German Hallertau Perle	\$5.50 /lb
#4053	German Tettnang Tettnang	\$7.00 /lb
#4054	German Northern Brewer	\$5.50 /lb
#4018B	Czech Saaz	\$7.00 /lb
#4038B	English Kent Golding	\$7.00 /lb

American Pelletized Hops		11 lb. bag
#4004B	Cascade	\$3.75 /lb
#4037B	Centennial	\$6.50 /lb
#4005B	Chinook	\$4.00 /lb
#4008B	Fuggle	\$6.00 /lb
#4013B	U.S. Kent Golding	\$6.00 /lb
#4036B	Liberty	\$6.50 /lb
#4001B	Mt. Hood	\$6.00 /lb
#4019B	U.S. Tettnang	\$6.00 /lb
#4020B	Williamette	\$6.00 /lb



Infusion Bag

40" long with width stretch up to 48", food grade material pack 10 per bundle. Perfect for hops.

Catalog #4044 Price \$12.50 per bundle

UNITANKS / FERMENTERS

Certified stainless steel material and components to meet specifications. Sanitary construction 100% TIG welded and sanitary polished with stringent controls, inspection and pressure testing. We guarantee unsurpassed tank quality and fantastic value with all valves and fittings included at no additional cost. We custom fabricate tank to meet brewery's space restrictions and we stock tanks with standardized specifications for quick delivery. Design pressure at 15 psi to meet standard brewing industry requirement. Custom configuration available.



Features:

- **Design pressure 15 psi**
- 4 stainless steel legs with leveling footpads.
- Interior shell: 304 stainless steel, thickness 11 gauge
- Exterior shell: 304 stainless steel, thickness 14 gauge
- Interior and exterior finish bright polish to 250 grit, hygiene surface.
- 60 degree cone bottom, with 25% head space.
- Racking port and discharge port with butterfly valve and fittings.
- Side manway door, shadowless.
- Dual zone dimple cooling jacket with glycol inlet and outlet.
- Polyurethane insulation thickness 1-1/2" for cooling jacket on side and bottom.
- Fully welded exterior shell.
- CIP arm and spray ball.
- Rotating tank racking arm
- Vacuum & pressure relief valve, relief pressure 15 psi, relief vacuum 5 psi.
- Pressure gauge.
- Thermometer.
- Perlick style Sample valve.
- Tank complete with fittings, valves and all parts



Capacity	Catalog	Price
7 barrel	#588-1	\$6250.00
10 barrel	#588-2	\$7650.00
15 barrel	#588-3	\$8650.00
20 barrel	#588-4	\$9550.00
30 barrel	#588-5	\$10,950.00
40 barrel	#588-6	\$13,500.00
50 barrel	#588-7	\$14,950.00
60 barrel	#588-8	\$16,950.00
80 barrel	#588-9	\$19,650.00
100 barrel	#588-10	\$22,950.00
120 barrel	#588-12	\$25,950.00



** Price is for delivery from West Coast or Michigan, please request freight quote. **
 Tank price is subject to change due to fluctuation of stainless steel material.

SERVING TANK / BRIGHT BEER TANK

Certified stainless steel material and components to meet specification. Sanitary construction 100% TIG welding and sanitary polish with stringent controls, inspections and pressure testing. We guarantee unsurpassed tank quality and fantastic value with all valves and fittings included at no additional cost. We custom fabricate tank to meet brewery's space restrictions and we stock tanks with standardized specifications for quick delivery.

Features:

- **Design pressure 15 psi**
- 4 stainless steel legs with leveling feet.
- Interior Shell: 304 stainless steel, thickness 11 gauge
- Exterior shell: 304 stainless steel, thickness 14 gauge
- Interior and exterior finish bright polish to 250 grit, hygiene surface.
- Flanged and dished head top and bottom, 25 % head space.
- Racking port and discharge port with butterfly valve & fittings.
- Side manway door.
- Dual zone cooling jacket
- Polyurethane insulation thickness 1-1/2" for cooling jacket.
- Fully welded exterior shell.
- CIP arm and spray ball.
- Carbonation system.
- Vacuum & pressure relief valve, relief pressure 15 psi, relief vacuum 5 psi.
- Pressure gauge.
- Thermometer.
- Perlick Sample valve.
- Tank complete with fittings, valves and all parts



<i>Double Wall Serving Tank with Cooling Jacket</i>		
<i>Capacity</i>	<i>Catalog</i>	<i>Price</i>
7 barrel	#575-1	\$6,350.00
10 barrel	#575-2	\$7,750.00
15 barrel	#575-3	\$8,750.00
20 barrel	#575-4	\$9,650.00
30 barrel	#575-5	\$11,950.00
40 barrel	#575-6	\$14,500.00
50 barrel	#575-7	\$15,900.00
60 barrel	#575-8	\$17,900.00
80 barrel	#575-9	\$20,650.00
100 barrel	#575-10	\$23,950.00
120 barrel	#575-12	\$26,950.00

<i>Single Wall Serving Tank, no Cooling Jacket</i>		
<i>Capacity</i>	<i>Catalog</i>	<i>Price</i>
7 barrel	#586-1	\$4,750.00
10 barrel	#586-2	\$5,850.00
15 barrel	#586-3	\$6,450.00
20 barrel	#586-4	\$7,250.00
30 barrel	#586-5	\$8,850.00
40 barrel	#586-6	\$9,950.00
50 barrel	#586-7	\$11,500.00
60 barrel	#586-8	\$12,500.00
80 barrel	#586-9	\$14,500.00
100 barrel	#586-10	\$17,500.00
120 barrel	#586-12	\$19,900.00

** Price is for delivery from West Coast or Michigan, please request freight quote. **
 Tank price is subject to change due to fluctuation of stainless steel material.

SERVING TANK / BRIGHT BEER TANK

Certified stainless steel materials, components and construction to meet ASME specification. Sanitary construction with laser welding and sanitary mirror polish. ASME design and production controlled, inspected and pressure tested. We guarantee unsurpassed tank quality and fantastic value with all valves and fittings included at no additional cost. We custom fabricate tank to meet brewery's space restrictions and we stock tanks with standardized specifications for quick delivery.

Features:

- **Design pressure 30 psi (ASME sect. 8 Div 1)**
- 4 stainless steel legs with leveling feet.
- Interior Shell : 304 stainless steel
 thickness 9 gauge (7 bbl - 30 bbl)
 thickness 3 gauge (40 bbl - 100 bbl)
- Exterior shell: 304 stainless steel, thickness 14 gauge
- Interior and exterior finish bright mirror polish to 650 grit, hygiene surface and easi-clean.
- Flanged and dished head top and bottom.
- Racking port and discharge port with butterfly valve and fittings.
- Side manway door.
- Double wall with half pipe channel cooling jacket with operating pressure 60 psi.
- Polyurethane insulation thickness 3" for cooling jacket.
- Fully welded exterior shell.
- CIP arm and spray ball.
- Carbonation system.
- Vacuum & pressure relief valve, relief pressure 30 psi, relief vacuum 5 psi.
- Pressure gauge.
- Thermometer.
- Perlick style sample valve.
- Tank complete with fittings, valves and all parts



<i>Capacity</i>	<i>Catalog</i>	<i>Price</i>
7 barrel	#577-1	\$8900.00
10 barrel	#577-2	\$9700.00
15 barrel	#577-3	\$10,900.00
20 barrel	#577-4	\$12,900.00
30 barrel	#577-5	\$17,900.00
40 barrel	#577-6	\$21,900.00
60 barrel	#577-7	\$25,900.00
80 barrel	#577-8	\$28,900.00
90 barrel	#577-9	\$30,900.00
100 barrel	#577-10	\$33,900.00

** Price is for delivery from West Coast or Michigan, please request freight quote. Tank price is subject to change due to fluctuation of stainless steel

Brewhouse



**Mini-Brewery 2 barrel & 4 barrel
for pilot plant or small pub.**





KEG CLEANING & FILLING MACHINE

Masterkeg Simplex is a semi-automatic single head keg washing and filling monoblock. Designed for washing, sterilizing and filling stainless steel kegs. Made of 304 stainless steel, sanitary design. Automatic cleaning and filling, with manual keg loading and unloading. Production is 12 to 16 half barrel kegs per hour.

Catalog #5923
Price \$19,950.00

Masterkeg Compact is a semi-automatic 2 head keg washing and filling monoblock. Designed for washing, sterilizing and filling stainless steel kegs. Made of 304 stainless steel, sanitary design. Automatic cleaning and filling, with manual keg loading and unloading. Production is 24 to 32 half barrel kegs per hour.

Catalog #5924
Price \$39,950.00



Bunging Pressure Regulator with DIN connection

Catalog # 2691
Price \$750.00

Beer Sampling Pig-Tail



Made of
304 stainless steel
with
1-1/2" tri-clamp
connection.

Catalog #2692
Price \$95.00

Manual Keg Filling Head

Filling head for Sankey kegs made of 304 stainless steel with tri-clamp butterfly valve, pressure gauge, pressure release valve and sight glass. Completely assembled and ready to use, simply connect to your brewery hose.

Special features: CO₂ level is adjustable, CIP cleaning ability, lockable control device, stop beer flow with sight glass for easy control.

Catalog #5921
Price \$1795.00



1/2 barrel Sankey Beer Kegs

1/2 barrel keg (15.5 gallon) brand new keg with Sankey tapping tube. Manufactured by Franke Belfa in Germany of premium quality 304 stainless steel. Kegs are pickled, passivated and polished, durable kegs with quick delivery from stock.

Catalog #2533

Price \$99.00



Kegs for Yeast Propagation

Brand new kegs, capacity 1/2 barrel with 4" neck opening and a transfer port in 1-1/2" tri-clamp ferrule welded on bottom side wall. Suitable for yeast propagation or special storage needs. 4" end cap reducer to 1-1/2" TC, gasket and tri-clamp are included in price.

Catalog # 2531

1/2 Barrel (15.5) gallon

\$275.00

Sparflex Champagne Wire Hoods

Premium wirehood with disc, packed 2700 per case.



Catalog	Stock color	Price / thousand
#2300-1	Black Disc with Black Wire	\$53.00
#2300-2	Silver Disc with Silver Wire	\$49.00
#2300-3	Silver Disc with Gold Wire	\$53.78

Sparflex Polylam Champagne Capsule

Pack 2500 capsules per case, price \$78.32 per thousand.

Catalog	Color
#2301-1	Gold
#2301-2	Bronze,
#2301-3	Matt Black
#2301-4	Glossy Black

Pebbled Aluminum Champagne Capsule



Pack 2500 capsules per case, price \$63.02 per thousand.

Catalog	Color
#2302-1	Gold Pebbled
#2302-2	Black.



Beer Nut with 1-1/2" tri-clamp

For serving tank to beer line. Tail piece is not included.

Catalog #85-05

Price \$19.00



Keg Caps

Catalog	Color	Price (Bag of 100 caps)
#5920-1	Yellow	\$15.00
#5920-2	Blue	\$15.00
#5920-3	White	\$15.00

Crown Caps



Color in gold, package 10,080 caps in a carton.

Catalog #2301B
 Price \$99.00

Rinser & Sparger for Bottles

Manual bottle rinser and sparger with double water jet bottle rinser with a water filter and a double air jet sparger with filter for gas. Built on stainless steel frame on stand.
 Catalog #3355 Price \$1995.00



Sparger for Bottles

Manual bottle rinser with 4 sparger, built on stainless steel frame on stand.
 Catalog #3359 Price \$1595.00



Filling Machine for Sparkling Wine or Cider

A manual counter pressure filler for any carbonated beverage in glass bottle, made of 304 stainless steel for commercial operation. Table top designed with protective polycarbonate cover for bottling.

Two Spout Sparking Filling Machine - production 100 bottle / hour
 Catalog #3359-2 Price \$4395.00

Four Bottles Sparking Filling Machine - production 200 bottle / hour
 Catalog #3359-4 Price \$6395.00

6 Spout Gravity Bottle Filler

Bottle filler for non-carbonated beverages with automatic shut-off, fills every bottle at the same height, fill heights can be adjusted in seconds by twisting filling head. Accommodates wide range of bottle heights with easy adjustment by sliding bottle tray to desired height. Made of 304 stainless steel, holding tank with stainless steel float system. Easy to clean and maintain. Production rate is about 700 bottles per hour.
 Catalog #2477 Price \$1695.00



MacroBins

High pressure injection molded HDPE bins, U.V. stabilized and FDA approved. Non-insulated, durable bins for food processing or storage. Lid sold separately.

	MacroBin 24 Solid	MacroBin 24 Vented	MacroBin 48 Solid	MacroBin 48 Vented	T-Bin (Double Wall)
<i>Dimensions</i>	47"x 47"x 28"h	47"x 47"x 28"h	48"x 48"x 52.5"h	48"x 48"x 52.5"h	36"x 46.75"x 36.5"h
<i>Volume</i>	181 gallon	42,000 cu. inch	407 gallon		240 gallon
<i>Load Capacity</i>	1200 lb. max	1200 lb. max.	3000 lb. max	3000 lb. max	2000 lb. max
<i>Bin Weight</i>	93 lb.	93 lb.	188 lb.	188 lb.	133 lb.
<i>Stacking</i>	8	8	5	5	3
<i>Forklift Opening</i>	Two-way	Two-way	Two-way	Two-way	4-way
<i>Color</i>	Ivory	Ivory	Ivory	Ivory	White
<i>Catalog #</i>	#29-24S	#29-24V	#29-48S	29-48V	#29-T
<i>Price</i>	\$259.00	\$259.00	\$379.00	\$379.00	\$439.00

Lid for MacroBin 48
 Lid for MacroBin 24

Catalog # 29-48L Price \$59.00
 Catalog #29-24L Price \$59.00



Champagne Corker

with Wire Tightening Attachment

Manual corker for small production of bottle conditioned specialty ale for use with natural champagne corks.
 Attachment to hold down bottle & wirehood for tightening.

Specifications:

Jaw:	brass 4 pcs iris.
Compressed cork diameter:	16mm
Max. cork length:	51mm
Bottle neck opening:	18mm
Max. bottle diameter:	200mm
Max. bottle height:	400mm
Catalog #2015-46	Price:\$2895.00

We stock new barrels and wide selection of hand tools for barrel and cellar operation, please request a Winery Catalog.

Oak Tanks

European oak cask for beer, wine and spirit production, handcrafted in traditional cooperaged with oak fire toasting. Our oak tanks are available in round, oval and cask equipped with stainless steel manway and stainless steel valve for easy and sanitary operation. Capacity range 264 gallon to 1500 gallon. It's an indispensable storage device for flavor and slow air exchange, benefit for specialty beer is well worth the investment. Please call or email for quotation.



Barrel Racks

Stainless steel barrel rack (304) holds two barrels for 59 gallon or 53 gallon whiskey barrel.

- #2991 Double Barrel Rack (stackable type) \$125.00
- #2991-2 Half Rack (Floor base rack) \$95.00



Barrel Transfer Bull Dog



A handy tool to pressurize barrel with gas and push liquid out of barrel gently without agitation. Connection is 1/2" tri-clamp and gas connection is 1/4" NPT female. Sightglass included in price.

Catalog #2980 Price \$395.00



Barrel Filler

A time saving device to fill liquid into barrel Filler with a trigger on/off valve in 1" stainless steel pipe and 1-1/2" tri-clamp connection to hose.

Catalog #2985 Price \$125.00

Schneider Centrifugal Pump

Centrifugal pump from Germany by Schneider. Pumps are self-priming, with 3 phase protective motor UL, CSA in single speed 220V., 60 Hz.. Pump housing and impeller is stainless steel, with by-pass and reversing switch and 1-1/2" tri-clamp connection. Pump is mounted on wheel cart.



Model	Capacity	Motor	Catalog	Price
Regent E 3600	16 gallon	0.75 kw	#2973	\$2295.00
Regent E 6000	26 gallon	1.5 kw	#2973-2	\$3295.00
Regent E 9500	42 gallon	2.2 kw	#2973-3	\$4295.00
Regent E 16000	70 gallon	4.0 kw	#2973-4	\$5295.00

STEROX

Cleaning Powder for Brewery & Beverage Processing

A non-foaming, chlorine free, alkaline powder containing active oxygen, phosphates and additives.

Formulated specially for use in breweries, wineries and food processing plants for cleaning, bleaching & deodorizing tanks, equipment and production area.

Advantages:

- 4 in 1 action-cleaning, antibacterial, bleaching & deodorizing
- Non chlorine with active oxygen
- Removes fermentation residues
- Good solubility and non foaming
- No fragrance with no odor
- Free flowing powder
- Energy efficient - does not require heating water

Catalog #4570 Price \$100.00 / bag of 50 lb.



Dissolved Oxygen Meter

A microprocessor-based, bench top dissolved oxygen meter that is easy to use with large LCD display. Automatic calibration for D.O. and temperature in seconds with automatic value recognition. Automatic compensation for temperature, altitude and salinity variations. Direct dissolved oxygen measurements in ppm or in %, logging of up to 8000 samples divided into 99 lots, PC serial interface and Windows compatible.

Specification:

- Range: mg/L O₂ 0.00 to 45.00
- Resolution: mg/L O₂ 0.00 to 300.0
- Accuracy (@20 C/ 68 F) ±1.5% of full scale
- Calibration: Automatic single or double at 0.00 C & 50.0 C

Catalog #2678 Price \$1100.00



pH Bench Meter

Advanced pH meter featuring automatic buffer recognition at pH 7 and 3. Meter is designed to calibrate to proper pH range from 2.5 to 3.5 pH with accuracy of +/- 0.0002 pH. Special electrode resists the sensor clogging effects, also detects when electrode needs cleaning and gives a warning during calibration. Logging of up to 100 samples shown right on the display. Price includes pH electrode, magnetic stirrer, calibration solution, cleaning and storage solutions.

Catalog #2734 Price \$585.00

Beer Haze Meter

A professional haze meter using the nephelometric method (measurement at 90 degree angle) combined with an infrared light source (890 nm) to reduce color interference. Haze is normally measured after chilling so haze meter is supplied complete with digital thermometer.

Specifications:

Range: 0.00 to 10 EBC / 10 to 250 EBC
 Accuracy: ± 0.2 EBC or $\pm 5\%$
 Resolution: 0.01 / 1 EBC
 Light Detector: Silicon Photocell
 Catalog #2677 Price \$349.00



Pressure Tester for Crown Cap

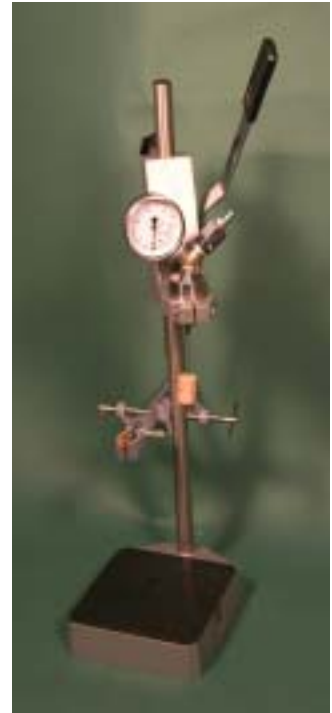
Instrument to measure pressure inside bottle, designed to pierce through standard 26 - 27 mm crown cap. Pressure rated 0 - 6 bar. Easy to use and affordable.

Catalog #2697 Price \$245.00

Pressure Tester for Champagne Cork

Instrument to measure pressure inside bottle, designed to pierce through champagne cork. Pressure rated for 0 - 10 bar. Easy to use bench top design design.

Catalog #2696 Price \$595.00



Digital Electro Ebullimeter

Designed to determine the alcohol percentage automatically, by pushing START switch. Ebullimeter automatically brings the sample to boiling point and directly shows the alcohol percentage of the sample on LCD display. Equipped with a microprocessor which automatically compensates for barometric pressure.

Catalog #2676 Price \$2995.00

Thermometers

Rugged thermometer with T-shaped handle fits comfortably in hand with probe length of 11.8" in stainless steel. Easy and simple to use with high standards of performance, with LCD on top of the meter allows easy reading. Ideal solution for temperature monitoring.

Specifications:

Range: -58.0 to 428.0 F
 Resolution: 0.1 F
 Accuracy: ± 0.6 F
 Probe: 11.8" stainless steel
 Catalog #2737 Price \$50.00





Kent Refractometers

Three new analog refractometers for juice and alcohol measuring with automatic temperature compensation 10 - 30 C. degree.
 No tools needed for calibration, ideal for field work or lab.
 Precise optical instrument in plastic carrying case at affordable price.



<p>Refractometer for Juice Range: 0 - 32% Brix Resolution: 0.2% Accuracy: ± 0.2% Catalog #2727 Price \$39.00</p>	<p>Hi-Brix Refractometer Range: 28 - 62% Brix Resolution: 0.2% Accuracy: ± 0.2% Catalog #2728 Price \$39.00</p>	<p>Refractometer for Alcohol Range: 0 - 25% vol. 0 - 40% Brix Resolution: 0.2% vol. & Brix Accuracy: ± 0.2% Catalog #2729 Price \$39.00</p>
--	---	--

Atago Refractometer

Digital Pocket Refractometer PAL 1

Light & compact, automatic temperature compensation, high water resistance.

Range: 0.0 - 53.0%
 Resolution: 0.1%
 Accuracy: 0.2%
 Temperature 10 - 40 C
 Catalog #2733
 Price \$385.00



Handheld Refractometers

Model ATC-1E. Automatic temperature compensated. Easy to read.

Range: Brix 0.0 - 32.0%
 Resolution: 0.2%
 Sample Temp.: 10 - 30 C
 Catalog #2730 Price \$270.00



Rotating Tank Racking Arm

A simple and inexpensive racking arm attached to tank racking port to facilitate maximum amount of liquid transfer from tank. Arm is 18" long and reaches into center of small tank allowing adjustment for lees during racking. Arm tip is cut in angle for better control. Rotating handle is 10" long, easy to operate. To rotate racking arm, just slightly loosen tri-clamp and move handle to desired position. A teflon gasket is necessary between racking arm and tank ferrule. Made of 304 stainless steel, sanitary construction and mirror polish.



Racking Arm Pipe ID	Connection		Catalog	Price
	Fit Tank TC	Fit Valve TC		
1"	1-1/2"	1-1/2"	#8051	\$69.00
1-1/2"	2"	1-1/2"	#8052	\$75.00
1-1/2"	2"	2"	#8053	\$75.00



Hygienic Tools

Lightweight & sturdy, hygienically designed for beverage industry. Injection molded white color polypropylene or nylon, meets FDA and USDA requirements. Chemical & corrosion resistant, tolerates temperature -22 F to 176 F.

Fork with handle

Blade 10.5" & length 49", made of polypropylene.
 Cat. #298-4 Price \$95.00

Rake with handle

Injection molded nylon, rake 7.5" x 8" & handle length 68".
 Cat. #298-3 Price \$95.00

Hoe with Handle

Injection molded nylon, hoe 8" x 11" and handle length 68"
 Catalog #298-2



Large Blade Shovel

Ergonomic designed, made of polypropylene. Blade 13.5" and length 51".
 Cat. #298-6 Price \$85.00

Ergonomic Sieve Shovel

Make your sifting & graining applications less of a chore, ergonomic design reduces strain when bending & lifting. Blade 13.5" x length 51" Slot size is 0.5" x 3"
 Cat. #298-5 Price \$79.00

Paddle

One-piece mixing paddle scraper with long handle, made of polypropylene. Blade 6" x 13" and length 52"
 Cat. #298-7 Price \$55.00

Tank Brush with handle

Tank Brush 5.5" x 8" with polyester bristles and 67" long handle
 Catalog #298-9 Price \$69.00

Tank Thermometer

Bimetal Thermometer with 3" stainless steel dial face and 1/2" NPT male back mounting connection for tank thermometer well. Dual scale F & C in color with calibrate reset screw. Superior quality and accuracy.

Catalog	Temperature	Probe Length	Price
#2823-1	0 - 150° F	4"	\$15.00
#2823-2	0 - 150° F	5"	\$15.00
#2823-3	0 - 150° F	6"	\$15.00
#2823	0 - 150° F	9"	\$15.00
#2823-6	0 - 250° F	2-1/2"	\$15.00
#2823-7	0 - 250° F	9"	\$15.00



Sanitary Tri-clamp Thermometer Well

1-1/2" Tri-clamp sanitary adaptor for thermometer for fitting to tank ferrules. Available in various probe length. Thermometer is not included.

Catalog	Probe Length	Price
#80-153	2-1/2"	\$39.00
#80-154	5"	\$39.00
#80-155	9"	\$39.00

Thermometer Well



Thermometer well with 9" probe with 1/2" NPT female connection for

thermometer. For tank welding.
 Catalog #80-15 Price \$49.00

Butterfly Valves



Premium quality stainless steel with 12 position locking handle also in stainless steel and interior silicone valve seat. Meets 3A sanitary standards with beautiful mirror polish. Best butterfly valves at great price.

Size	Body Length	Part Number	Price
1"	3.5"	90-10	\$79.00
1-1/2"	3.5"	90-15	\$85.00
2"	3.75"	90-20	\$95.00
2-1/2"	3.81"	90-25	\$110.00
3"	4.12"	90-30	\$145.00
4"	4.81"	90-40	\$250.00

Replacement Butterfly Valve Seats
 Fit our butterfly valve available in silicon or EPDM.



Size	Part Number	Price
1"	90-10A	\$7.50
1-1/2"	90-15A	\$7.50
2"	90-20A	\$7.50
3"	90-30A	\$9.50



3-Way Ball Valves

Tri-Clamp connection 3-way ball valve, made of 304 stainless steel with stainless steel handle.

Size	Length	Part Number	Price
1-1/2"	5.5"	#98-95	\$325.00
2"	6.5"	#98-96	\$375.00

Ball Valves

Tri-clamp ball valve, can be taken apart for easy cleaning and maintainance.



Corrosion resistant 316 stainless steel body, uniform bore diameter improves flow and eliminates pooling of potential contaminants. Meets 3A sanitary standards and mirror polish.

Size	Part Number	Price
1"	98-10	\$85.00
1-1/2"	98-15	\$120.00
2"	98-20	\$150.00
2-1/2"	98-25	\$250.00
3"	98-30	\$399.00
4"	98-40	\$695.00

Ball Valves with Bottom Drain

New design with bottom drain for easy cleaning and sanitary control. Light weight to reduce stress on tank racking port. Tri-clamp connection made of 304 stainless steel.



Size	Part Number	Price
1-1/2"	#98-01	\$120.00
2"	#98-02	\$150.00
3"	#98-03	\$399.00

NPT Ball Valve



Small Ball valve, full port opening with NPT female threaded ends and locking handles, made of 316 stainless steel. Suitable for liquid or air application.

Size	Part Number	Price
1/4"	98-14	\$19.00
3/8"	98-38	\$24.00
1/2"	98-12	\$24.00
3/4"	98-34	\$27.00

Sight Glass

In-line sight glass with 4 bolts for larger viewing area, with tri-clamp connections. Made of 304 stainless steel with pyrex glass and silicone gasket.



Size	Length	Part Number	Price
1"	5.75"	#92-10	\$75.00
1-1/2"	5.75"	#92-15	\$78.00
2"	5.75"	#92-20	\$96.00
2-1/2"	7.25"	#92-25	\$115.00
3"	7.25"	#92-30	\$150.00
4"	7.25"	#92-40	\$185.00

Replacement Parts for Sight Glass

Size	Description	Part	Price
1"	Silicone Seal	#92-10A	\$5.00
1-1/2"	Silicone Seal	#92-15A	\$5.00
2"	Silicone Seal	#92-20A	\$7.50
1"	Pyrex Glass Length 2.5"	#92-10G	\$20.00
1-1/2"	Pyrex Glass Length 2.5"	#92-15G	\$20.00
2"	Pyrex Glass Length 2.5"	#92-20G	\$30.00



Check Valves

Made of 304 stainless steel with tri-clamp connections can be taken apart for cleaning. Meets 3A sanitary standards.

Size	Part Number	Price
1"	#94-10	\$110.00
1-1/2"	#94-15	\$120.00
2"	#94-20	\$150.00
2-1/2"	#94-25	\$210.00

Globe Valve



Globe valves have accurate regulating adjustment, with NPT female pipe connections, made of 316 stainless steel.

Size	Part Number	Price
1"	#992-10	\$65.00
1-1/2"	#992-15	\$125.00

Heavy Duty Tri-Clamp



Premium quality with beautiful mirror polished in 304 stainless steel. Used to clamp on two ferrules with a tri-clamp gasket for connections.

Size	Part Number	Price
1-1/2"	#13MHHM-15	\$7.50
2"	#13MHHM-20	\$8.75
2-1/2"	#13MHHM-25	\$12.00
3"	#13MHHM-30	\$13.50
4"	#13MHHM-40	\$16.00
6"	#13MHHM-60	\$35.00

Solid End Cap

Used to seal the end of a tube or valves with tri-clamp ferrules. A clamp gasket and tri-clamp are needed for connection. 304 stainless steel meets 3A sanitary standard.



Size	Part Number	Price
1-1/2"	#16AMP-15	\$3.75
2"	#16AMP-20	\$4.75
2-1/2"	#16AMP-25	\$7.50
3"	#16AMP-30	\$9.00
4"	#16AMP-40	\$18.00
6"	#16AMP-60	\$48.00

Gate Valve

Used for water on/off with NPT female pipe connections, made of 316 stainless steel.



Size	Part Number	Price
1"	#991-10	\$65.00
1-1/2"	#991-15	\$125.00



Tri-Clamp Gasket

A seal between two ferrules in all TC connections. Buna is the most common and economical material used. Please select Silicone, teflon or EPDM base on operation and applications.

Buna Black Clamp Gasket		
Size	Part Number	Price
1"	40MPU-10	\$0.75
1-1/2"	40MPU-15	\$0.50
2"	40MPU-20	\$0.50
2-1/2"	40MPU-25	\$0.75
3"	40MPU-30	\$0.75
4"	40MPU-40	\$1.25
6"	40MPU-60	\$8.00

EPDM Black Clamp Gasket		
Size	Part Number	Price
1"	40MPE-10	\$1.50
1-1/2"	40MPE-15	\$1.50
2"	40MPE-20	\$1.50
3"	40MPE-30	\$2.50

Flange Buna Black Clamp Gasket		
Size	Part Number	Price
1"	40MPFU-10	\$0.75
1-1/2"	40MPFU-15	\$0.50
2"	40MPFU-20	\$0.50
2-1/2"	40MPFU-25	\$0.75
3"	40MPFU-30	\$0.75

Screen Clamp Gasket

316 stainless steel, 10 mesh screen

Size	Part Number	Price
1"	40MPUS-10	\$20.00
1-1/2"	40MPUS-15	\$20.00
2"	40MPUS-20	\$24.00
2-1/2"	40MPUS-25	\$34.00
3"	40MPUS-30	\$36.00

Buna White Clamp Gasket		
Size	Part Number	Price
1"	40MPUW-10	\$0.75
1-1/2"	40MPUW-15	\$0.50
2"	40MPUW-20	\$0.50
2-1/2"	40MPUW-25	\$0.75
3"	40MPUW-30	\$0.75



Perforated Clamp Gasket

316 stainless steel

Size	Part Number	Price
1"	40MPUP-10	\$20.00
1-1/2"	40MPUP-15	\$20.00
2"	40MPUP-20	\$24.00
2-1/2"	40MPUP-25	\$34.00
3"	40MPUP-30	\$36.00

Silicone Clamp Gasket		
Size	Part Number	Price
1-1/2"	40MPX-15	\$1.50
2"	40MPX-20	\$1.50
3"	40MPX-30	\$2.50
4"	40MPX-40	\$3.00

Teflon Clamp Gasket		
Size	Part Number	Price
1-1/2"	40MPG-15	\$1.50
2"	40MPG-20	\$1.50
3"	40MPG-30	\$2.50
4"	40MPG-40	\$3.00

Diffuser Aeration Clamp Gasket

316 stainless steel 2 micron porous disc molded with EPDM gasket. Can be used to diffuse digester gases, 2 psi push gas required. Meet 3-A, USDA and pharmaceutical standards.

Size	Part Number	Price
1-1/2"	40MPE-15	\$125.00
2"	40MPE-20	\$145.00

Property	Performance Properties				
	Buna-N	Silicone	Teflon	EPDM	Viton
Tensile Strength	Fair-Good	Good	Excellent	Good-Excellent	Good-Excellent
Electrical Properties	Poor	Excellent	Excellent	Excellent	Good
Weather Resistance	Good	Excellent	Excellent	Excellent	Good
Ozone Resistance	Fair	Excellent	Excellent	Excellent	Excellent
Heat Resistance	225 F	450 F	450 F	275 F	400 F
Cold Resistance	-40 F	-80 F	-110 F	-55 F	-20 F
Steam Resistance	Good	Poor	Excellent	Good-Excellent	Poor
Tear Resistance	Good	Excellent	Excellent	Good	Fair
Acid Resistance	Good	Good	Excellent	Good-Excellent	Good

Sock Screen Gasket



Tri-clamp connection with 316 stainless steel 10 mesh screen. Material meets all FDA requirements and 3-A sanitary standards. Over 300% more stainless

steel area than conventional screening gasket. Decreases pump wear and energy consumption, smoother operation.

Short Sock Screen Gasket

Size	Part number	Price
1-1/2"	1107-15S	\$42.50
2"	1107-20S	\$45.50

Long Sock Screen Gasket

Size	Part number	Price
1-1/2"	1107-15L	\$42.50
2"	1107-20L	\$45.50



Injector

For in-line fining agents addition during liquid transfer through ball valve. With 1-1/2" tri-clamp connection, easy, uniform and effective.

Cat. #85-10

Price \$119.00

Streamline Strainer



Strainer contains a perforated stainless steel basket and a wire mesh basket that allows you to remove large particles, seeds or grape skins from process stream. Strainers are suitable for horizontal or vertical mounting, directly into the pipe works. 2" tri-clamp connection.

Catalog #2020
 Price \$345.00



Turbine Flow Meter

Wine or fluid being measured passes through the housing, and causes a rotor to spin with

a rotational speed equivalent to the velocity of the fluid. Durable 316 stainless steel 2 piece design with rulon sleeve bearing, provides accurate reading. Accuracy $\pm 0.5\%$ over entire flow range. Meter includes a battery operated rater in gallon reading and tri-clamp connection meets 3-A sanitary standards. Maximum temperature 250 F. and maximum pressure 115 psi.

Size	Connection	Flow Range	Catalog	Price
1"	1-1/2" TC	7 - 70 gpm	#985-3	\$2395.00
1-1/2"	1-1/2" TC	13 -130 gpm	#985-1	\$2395.00
2"	2" TC	25 -250 gpm	#985-2	\$2595.00

Econo Turbine Flow Meter

Cost effective and accurate turbine flow meter, made of 316 stainless steel with accuracy $\pm 1.0\%$ over flow range. Temperature range -100 F to + 300 F and maximum pressure 600psi. Fitted with a 1-1/2" tri-clamp connection.



Size	Flow range	Catalog	Price
1"	5-50 gpm	#985-8	\$795.00
1-1/2"	15-180 gpm	#985-9	\$895.00

Hose Adaptor (Hose Barb)



Sanitary hose barb with long barb and heavy duty wall thickness for better fit and insertion into beverage hose. The long barb allows multiple clamps to secure it to hose. Made of 304 stainless steel with mirror polished and meets 3A sanitary standard. Best quality at great prices.

Barb Size	TC	Length	Catalog	Price
1"	1-1/2"	4.5"	#82-10	\$20.00
1-1/2"	1-1/2"	4.5"	#82-15	\$20.00
2"	2"	4.5"	#82-20	\$24.00
2-1/2"	2-1/2"	4.5"	#82-25	\$30.00
3"	3"	4.5"	#82-30	\$45.00
4"	4"	4.5"	#82-40	\$56.00
6"	6"	4.5"	#82-60	\$120.00

Barb Size	TC	Catalog	Price
3/8"	1-1/2"	#82-01	\$19.00
1/2"	1-1/2"	#82-02	\$19.00
1/4"	1-1/2"	#82-03	\$19.00
3/4"	1-1/2"	#82-04	\$19.00

Hose Clamp - stainless steel

Clamp Size	Fit Hose OD	Catalog	Price (bag of 10 pcs.)
5/8"	3/8" - 5/8" (10 - 16 mm)	#82-71	\$1.00 each
7/8"	5/8" - 7/8" (16 - 23 mm)	#82-72	\$1.00 each
1-1/4"	5/8" - 1-1/4" (16 - 32 mm)	#82-73	\$1.00 each
2"	1-1/4" - 2" (32 - 51 mm)	#82-74	\$1.50 each
3"	2-1/4" - 3" (57 - 76 mm)	#82-75	\$1.50 each
3-3/4"	2-7/8" - 3-3/4" (72 - 95 mm)	#82-76	\$1.75 each
4-3/4"	4-1/8" - 4-3/4" (105 - 121 mm)	#82-77	\$2.00 each



Tri-Clamp x NPT Adaptor

Adapt a tri-clamp connection to a threaded NPT pipe connection. One end is tri-clamp and the other end is threaded NPT connection. Made of 304 stainless steel.

TC	x	Female NPT	Catalog	Price
1-1/2"	x	1/4"	#84-30	\$19.00
1-1/2"	x	1/2"	#84-07	\$19.00
1-1/2"	x	3/8"	#84-09	\$19.00
1-1/2"	x	3/4"	#84-03	\$25.00
1-1/2"	x	1"	#84-01	\$25.00
1-1/2"	x	1-1/4"	#84-32	\$25.00
1-1/2"	x	1-1/2"	#84-05	\$25.00
2"	x	1"	#84-15	\$30.00
2"	x	1-1/2"	#84-13	\$30.00
2"	x	2"	#84-11	\$30.00

TC	x	Male NPT	Catalog	Price
1-1/2"	x	1/4"	#84-31	\$19.00
1-1/2"	x	1/2"	#84-08	\$19.00
1-1/2"	x	3/8"	#84-10	\$19.00
1-1/2"	x	3/4"	#84-04	\$25.00
1-1/2"	x	1"	#84-02	\$25.00
1-1/2"	x	1-1/4"	#84-33	\$25.00
1-1/2"	x	1-1/2"	#84-06	\$25.00
2"	x	1"	#84-16	\$30.00
2"	x	1-1/2"	#84-14	\$30.00
2"	x	2"	#84-12	\$30.00



Highest quality sanitary fitting in 304 stainless steel, mirror polished meets 3-A sanitary standard, with heavy wall thickness and full length to meet specifications.



Ferrule (Long Weld)

For tri-clamp connection welding to pipe or equipment. 304 stainless steel, meets 3-A sanitary standard.

Size	Part Number	Price
1"	14AM7-10	\$6.75
1-1/2"	14AM7-15	\$6.75
2"	14AM7-20	\$7.75
2-1/2"	14AM7-25	\$10.75
3"	14AM7-30	\$14.75
4"	14AM7-40	\$19.75
6"	14AM7-60	\$25.75

Ferrule (Short Weld)

304 stainless steel

Size	Part Number	Price
1"	14WMP-10	\$4.75
1-1/2"	14WMP-15	\$4.75
2"	14WMP-20	\$5.75
2-1/2"	14WMP-25	\$6.75



Sanitary Manifold

1-1/2" pipe in length of 20" with tri-clamp 1-1/2" connection. Five ferrules in 1-1/2" tri-clamp as manifold connection for processing or bottling.

Catalog #3200 Price \$99.00



Tee TC

Tri-clamp connection for multi-purpose applications, meets 3-A sanitary standard. 304 Stainless Steel.

Size	Part Number	Price
1"	7MP-10	\$38.00
1-1/2"	7MP-15	\$45.00
2"	7MP-20	\$57.00
2-1/2"	7MP-25	\$79.00
3"	7MP-30	\$99.00
4"	7MP-40	\$165.00



Cross TC

With tri-clamp connection for multi-purpose applications, , meets 3-A sanitary standard. 304 Stainless Steel.

Size	Part Number	Price
1"	83-10	\$54.00
1-1/2"	83-15	\$56.00
2"	83-20	\$92.00
2-1/2"	83-25	\$120.00
3"	83-30	\$175.00
4"	83-40	\$250.00



Y Straight

304 stainless steel, meets 3-A sanitary standard.

Size	Part Number	Price
1-1/2"	797-15	\$69.00
2"	797-20	\$79.00



Y Curved

Size	Part Number	Price
1-1/2"	798-15	\$79.00
2"	798-20	\$79.00

How to determine Tri-clamp Size??

Size indicated is based on pipe outside diameter size, so when measuring ferrule or end caps size please follow our chart.

Tri Clamp	Ferrule OD
1"	= 1.984"
1-1/2"	= 1.984"
2"	= 2.516"
2-1/2"	= 3.047"
3"	= 3.579"
4"	= 4.682"



Reducer
Concentric Reducer with tri-clamp connection for transitions in pipe or hose sizes. Heavy wall construction with mirror polish in 304 stainless steel, meet 3-A sanitary standard.

Size	Part Number	Price
1" x 1-1/2"	31-14AMP1	\$35.00
1" x 2"	31-14AMP2	\$39.00
1-1/2" x 2"	31-14AMP3	\$39.00
1-1/2" x 3"	31-14AMP4	\$125.00
2" x 3"	31-14AMP5	\$60.00
2-1/2" x 1-1/2"	31-14AMP7	\$70.00
2-1/2" x 2"	31-14AMP8	\$70.00
2-1/2" x 3"	31-14AMP9	\$70.00
4" x 2"	31-14AMP10	\$90.00
4" x 3"	31-14AMP6	\$140.00



90° Elbow TC
 Elbow with tri-clamp, heavy wall construction with mirror polished in 304 stainless steel, meet 3A sanitary standard.

Size	Part Number	Price
1"	2CMP-10	\$25.00
1-1/2"	2CMP-15	\$25.00
2"	2CMP-20	\$34.00
2-1/2"	2CMP-25	\$59.00
3"	2CMP-30	\$75.00
4"	2CMP-40	\$120.00



Eccentric Reducer
 Premium quality as concentric reducer.

Size	Part Number	Price
2" x 1-1/2"	32W-20	\$45.00
3" x 2"	32W-30	\$75.00



Reducing Elbow 90° TC

Size	Part Number	Price
2" x 1-1/2"	2CMP-31MP	\$29.00

End Cap Reducer



Inexpensive reducer with compact and less intrusive set up for equipment or tank.

Reducing End Cap Size	Part Number	Price
2" x 1-1/2"	#3116-1	\$24.00
3" x 1-1/2"	#3116-2	\$29.00
4" x 1-1/2"	#3116-3	\$39.00

45° Elbow TC

Premium quality and mirror polish in 304 stainless steel, meet 3A sanitary standard.



Size	Part Number	Price
1"	2KMP-10	\$37.00
1-1/2"	2KMP-15	\$40.00
2"	2KMP-20	\$45.00

Miniature Spray Nozzles for barrels, kegs, drums or bottles

Spin Cleaning Head for Oak Barrels

For cleaning barrels or kegs, coverage of 3 to 6 ft in diameter in 180°, connection 3/4" NPT female. Diameter 1.25" and length 2.75".

Working pressure 1 to 4 bar.

Part # 80-93

Price \$125.00



Bottle Spray Nozzles

Unique extremely small for bottles neck opening, 300 degree spray down pattern. Length 1.1", width 0.44" (11 mm). 316 stainless steel, slide bearing. Maximum spray diameter 3 ft, max. temperature 375 F. Operation pressure 20 -60 psi, flow rate 2 - 3 gpm. Max. operating pressure 70 psi. Connection 1/8" male NPT.



Part # 80-89 Price \$159.00

Mini Whirling Spray Nozzles

Made of precision molded PVDF, with coverage of 3 ft to 5 ft in diameter, cleans at 360°. 1/2" NPT female connection. Spins with pressure as low as 5 PSI. Operating pressure 20-60 psi., flow rate 2 - 4 gpm. Max. pressure 70 psi., max. temperature 190 F. Tolerates a wide range of cleaners and solvents. Width 1.18" and length 3".



Part #80-91

Price \$69.00

Stainless Steel Mini Whirling Spray Nozzles



316 stainless steel material, same specification as PVDF model with PEEK slide bearing. Length 2", width 0.79" (20 mm). Operating pressure 20 - 60 psi, flow rate 4 - 8 gpm. Max. pressure 70 psi, max. temperature 250 F. Connection 3/8" male NPT.

Part #80-90 Price \$159.00

CIP Tank Cleaning Spray Ball

Rotating Spray Ball

With 360° and 10 ft of cleaning coverage, water pressure initiates ball to spin for better cleaning. Made of 304

stainless steel. Fits any opening 2" & bigger. Optimum operation: 25 GPM @35 psi.



Rotating Type	Part Number	Price
3/4" NPT female	80-94	\$125.00
Tri-Clamp 1-1/2"	80-96	\$125.00
Pin-End 1" ID	80-95	\$125.00

Stationary spray ball



With 360° and 10 ft of cleaning coverage, made of 304 stainless steel. Ball size is 2-1/2" in diameter. Optimum operation: 40 GPM @25 PSI.

Stationary Type	Part Number	Price
3/4" NPT female	80-99	\$39.00
Tri-Clamp 1-1/2"	80-97	\$39.00
Pin-End 1" ID	80-98	\$39.00

L Shape Wand 3/4" Pipe

Both ends NPT male 3/4" that can be connected to barrel spin cleaning head and water hose. Using this wand to reach into barrel bung hole when leaving barrel on rack. Cleaning spray ball sold separately.

Catalog #80-93A

Price \$24.00





Tank Vent

304 stainless steel construction, ideal for holding inert gas head pressures in tanks, 1/4" female NPT thread for gas inlet. 2" tri-clamp connection.

Pressure relief at 0.9 psi, vacuum break 0.083 psi.
 Maximum temperature & pressure rating 3 psi at 70 F.
 Suitable for wine tanks.

Catalog	Tri-Clamp Connection	Price
#80-16	1-1/2"	\$139.00
#80-17	2"	\$149.00



Vacuum & Pressure Relief Valve

Made of 304 stainless steel with tri-clamp connections, available with 15 or 30 psi pressure and 5 psi vacuum. Suitable for brewery tanks.

Size	Part Number	Pressure	Price
1-1/2"	#96-15	15 psi	\$175.00
1-1/2"	#96-15A	30 psi	\$175.00
2"	#96-20	15 psi	\$195.00
2"	#96-20A	30 psi	\$195.00



Spülboy Neptune T2000

Glass cleaning machine for in-sink operation, tank fitted with cleaning brushes and cleaning solution, and water rinser to spray clean glasses with fresh water. Ideal for bar and tasting room with sink and plumbing set up.

Catalog	Description	Price
#5960	Spülboy Neptune T2000	\$195.00
#5964	Replacement Round Center Brush	\$20.00
#5968	Replacement Square Side Brush	\$35.00
#5963	Spülboy Brush Soaking Powder	\$20.00
#5962	Spülboy Glass Cleaning Tablets	\$24.00

Micro-Oxygenation Carbonation Stone Assembly

Submersing porous body diffuses CO₂ gas directly into liquid to create carbonation or micro-oxygenation. Using carbonation, it is possible to remove excessive quantity of dissolved air. Small quantity of unabsorbed gas passing up through liquid and being relieved from top of the tank carries off the undesirable air. Use to mix finings into tanks for uniform mixing result. Stone with 1" OD x 8" long and 2 micron porosity and made of 316 stainless steel. Complete with 1-1/2" tri-clamp connections for mounting into bottom of tank.



Catalog	Description	Price
#85-50	Carbonation Assembly	\$275.00
#85-54	Replacement Stone	\$99.00

Inline Micro-Oxygenation System



Quality built, heavy duty micro-oxygenation system, an inexpensive way for inline micro oxygenation. Porous stone is made of 316 stainless steel with 1-1/2" OD x 4" long with 2 micron is built-in. Sight glass built-in for easy visual inspection. Gas inlet is equipped with a 1/4" NPT ball valve and inlet / outlet connection is sanitary tri-clamp.

Catalog	Tri-Clamp Connection	Price
# 85-45	2"	\$345.00
#85-45A	1-1/2"	\$345.00



Sample Valve

Sample valve connection with 1-1/2" tri-clamp to tank tri-clamp ferrule, made of 304 stainless steel with long body. Total length 4-1/4".
 Catalog #80-10 Price \$45.00

Perlick Style Sample Valve with compact and sanitary design in 304 stainless steel with 1-1/2" tri-clamp connection.
 Catalog #80-12 Price \$59.00



Sample valve NPT with connection in 3/8" male NPT. Compact body design.
 Cat. #80-13 Price \$59.00

Cask Sample Valve for installation to larger oak vat or cask, can be used for oak barrel or puncheon. Tapered end with thread for wood. 304 stainless steel.
 Cat. #80-14 Price \$69.00



Level Sight Gauge Valve

For tank construction, made of 304 stainless steel with connection to tri-clamp and NPT. Connection to tube OD 5/8" (16 mm).



Valve	Connection	Catalog	Price
Bottom	1/2" Male NPT	#80-18	\$69.00
Bottom	1-1/2" TC	#80-21	\$79.00
Top	1/2" Male NPT	#80-19	\$49.00
Top	1-1/2" TC	#80-22	\$59.00

Pressure Gauges

Stainless steel case with dial face 2.5" with glycerine filled or dry case.



Polycarbonated lens, brass internal and connection. 1/4" NPT male connection. Accuracy of 1.6%.



Sanitary Pressure Gauges

Designed to meet demanding sanitary requirement of food and beverage application.

- Ideal for clean-in-place or equipment washdown.
- Meets 3-A sanitary standard, all welded 316 stainless steel.
- Mounting connection available in lower or back.
- Glycerin filled with polycarbonate glass.
- 2% accuracy, pressure rating, 0-30 or 0-60 psi.

Catalog	Bottom Mounting	Price
#2725-1	0 - 30 psi Dry Case	\$12.00
#2725-2	0 - 60 psi Dry Case	\$12.00
#2725	0 - 100 psi Dry Case	\$12.00
#2725-6	0 - 30 psi Glycerine Filled	\$12.00
#2725-7	0 - 60 psi Glycerine Filled	\$12.00
Center Back Mounting		
#2725-3	0 - 30 psi Dry Case	\$12.00
#2725-4	0 - 60 psi Dry Case	\$12.00
#2725-8	0 - 30 psi Glycerine Filled	\$12.00
#2725-9	0 - 60 psi Glycerine Filled	\$12.00

Catalog	Dial Size	TC Connection	Price
#2724-1	2-1/2"	1-1/2"	\$250.00
#2724-2	2-1/2"	2"	\$250.00

Stainless Steel Tank Manway Doors

Oval Tank Manway

Door opening 13" x 17", opens in ward. Door thickness 2 mm (14 gauge), maximum pressure 45 psi.
 #80-50 Oval Manway \$245.00
 #80-50A Gasket for Oval Manway \$25.00



Square side manway door opening 12" x 16.5", opens out ward. Door thickness 2 mm (14 gauge), maximum pressure 7.2 psi
 Cat. #80-48 Price \$365.00

Square side manway door opening 17" x 21", opens out ward. Door thickness 2 mm (14 gauge), maximum pressure 15 psi.
 Cat. #80-483 Price \$439.00



Upright side manway
 Square door opening 21" x 16", opens out ward. Door thickness 2 mm (14 gauge), maximum pressure 15 psi
 Cat. #80-482 Price \$439.00

Round side manway
 Opens out ward. Door thickness 1.5 mm (16 gauge), maximum pressure 15 psi.

Opening	Catalog	Price
16"	#80-49	\$399.00
20"	#80-492	\$539.00



California Style 20" Manway Door
 Heavy duty side manway door round, out ward opening. Maximum pressure 15 psi (1 bar).
 Cat. #80-47 Price \$1195.00

Oak Cask Manway

Door opening 18" x 9.5", opens inward. Door thickness 2 mm (14 gauge). Maximum pressure 22 psi. Design to fit oval or round cask heading, will not work for upright oak cask.
 Cat. # 80-505 Price \$795.00



Manhole Cover

Round manhole cover, size 12". Door thickness 1.2 mm (18 gauge)

Opening	Catalog	Price
12"	#80-31	\$125.00
16"	#80-32	\$145.00



Butt Weld Valves & Fittings

Butterfly Valves

304 stainless steel body with 4 position locking handle and interior silicone valve seat. Meets 3A sanitary standards.

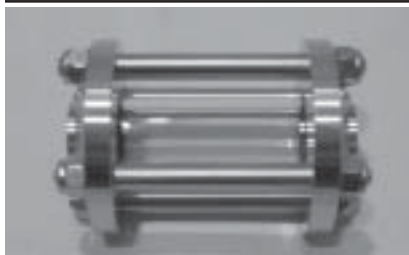
Size	Part Number	Price
1"	91-10	\$74.00
1-1/2"	91-15	\$80.00
2"	91-20	\$90.00
2-1/2"	91-25	\$105.00



Sight Glass

In-line sight glass with 4 bolts for larger viewing area. Butt Weld connection, made of 304 stainless steel with pyrex glass and silicone gaskets.

Size	Part Number	Price
1"	93-10	\$65.00
1-1/2"	93-15	\$75.00
2"	93-20	\$80.00
2-1/2"	93-25	\$90.00



90° Elbow

304 stainless steel, meets 3-A sanitary standard.

Size	Part Number	Price
1"	2CW-10	\$9.00
1-1/2"	2CW-15	\$15.00
2"	2CW-20	\$17.00
2-1/2"	2CW-25	\$30.00



45° Elbow

304 stainless steel, meets 3-A sanitary standard.

Size	Part Number	Price
1"	2KW-10	\$16.00
1-1/2"	2KW-15	\$26.00
2"	2KW-20	\$32.00
2-1/2"	2KW-25	\$50.00

Check Valves

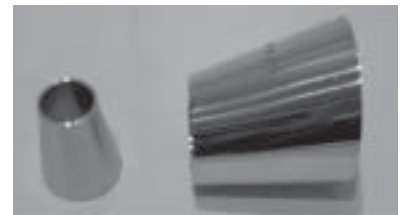
304 stainless steel, meets 3-A sanitary standard.

Size	Part Number	Price
1"	95-10	\$85.00
1-1/2"	95-15	\$110.00
2"	95-20	\$125.00
2-1/2"	95-25	\$150.00

Concentric Reducer

304 stainless steel, meets 3-A sanitary standard.

Size	Part Number	Price
1" x 1-1/2"	31W-1	\$19.00
1-1/2" x 2"	31W-2	\$20.00
2" x 3"	31W-4	\$40.00



Eccentric Reducer

304 stainless steel, meets 3-A sanitary standard.

Size	Part Number	Price
1" x 1-1/2"	32W-1	\$20.00
1-1/2" x 2"	32W-2	\$29.00
2" x 2-1/2"	32W-3	\$35.00

Tee

304 stainless steel, meets 3-A sanitary standard.

Size	Part Number	Price
1"	7W-10	\$17.00
1-1/2"	7W-15	\$20.00
2"	7W-20	\$27.00
2-1/2"	7W-25	\$29.00



DIN Fittings



German sanitary connections, commonly used with European equipment in 304 stainless, this is not Acme. Please confirm size with drawings or with manufacturer.

Size	Part Number	Price
DIN Ferrule - Threaded End		
DIN 40 (1-1/2")	DIN5-15	\$9.50
DIN 50 (2")	DIN5-20	\$10.50
DIN Ferrule - Liner		
DIN 40 (1-1/2")	DIN6-15	\$6.50
DIN 50 (2")	DIN6-20	\$7.50
DIN Nut		
DIN 40 (1-1/2")	DIN7-15	\$9.50
DIN 50 (2")	DIN7-20	\$10.50
DIN Silicone Gasket		
DIN 40 (1-1/2")	DIN8-40	\$2.50
DIN 50 (2")	DIN8-50	\$3.50
DIN Wrench	DIN99	\$59.00

** DIN x Tri-clamp Adaptor available, custom fabrication **
 Please call for price.

NPT Coupling



Size	Part Number	Price
1/2"	101-12	\$2.99
3/4"	101-34	\$2.99
1"	101-10	\$3.99

NPT Half Coupling



Size	Part Number	Price
1/2"	102-12	\$2.99
3/4"	102-34	\$2.99
1"	102-10	\$2.99

Pipe Thread Fittings

Reducing Nipple

304 stainless steel



Size	Part Number	Price
3/8" x 1/4"	111-01	\$3.95
1/2" x 1/4"	111-02	\$3.95
1/2" x 3/8"	111-03	\$3.95
3/4" x 1/4"	111-04	\$4.95
3/4" x 3/8"	111-05	\$4.95
3/4" x 1/2"	111-06	\$4.95
1" x 1/4"	111-07	\$5.95
1" x 3/8"	111-08	\$5.95
1" x 1/2"	111-09	\$5.95
1" x 3/4"	111-10	\$5.95
1-1/2" x 3/8"	111-11	\$6.95
1-1/2" x 1/2"	111-12	\$6.95
1-1/2" x 3/4"	111-13	\$6.95
1-1/2" x 1"	111-14	\$6.95
2" x 1"	111-15	\$9.95
2" x 1-1/2"	111-16	\$14.95
3" x 2"	111-17	\$17.95

90° Elbow

304 stainless steel



Size	Part Number	Price
1/2"	105-12	\$3.95
3/4"	105-34	\$3.95
1"	105-10	\$4.95
1-1/2"	105-15	\$6.95
2"	105-20	\$9.95

Street Elbow

304 stainless steel



Size	Part Number	Price
1/2"	106-12	\$3.95
3/4"	106-34	\$3.95
1"	106-10	\$5.95
1-1/2"	106-15	\$7.95
2"	106-20	\$11.95

Pipe Thread Fittings



Hexagon Bushing

304 stainless steel

Size	Part Number	Price
3/8" x 1/4"	113-01	\$3.95
1/2" x 1/4"	113-02	\$3.95
1/2" x 3/8"	113-03	\$3.95
3/4" x 1/4"	113-04	\$3.95
3/4" x 3/8"	113-05	\$3.95
3/4" x 1/2"	113-06	\$3.95
1" x 1/4"	113-07	\$4.95
1" x 3/8"	113-08	\$4.95
1" x 1/2"	113-09	\$4.95
1" x 3/4"	113-10	\$4.95
1-1/2" x 1/2"	113-11	\$5.95
1-1/2" x 3/4"	113-12	\$5.95
1-1/2" x 1"	113-13	\$5.95
2" x 1-1/2"	113-14	\$6.95
3" x 2"	113-15	\$9.95



Hose Nipple

304 stainless steel

NPT	Barb Size	Part Number	Price
1/4"	1/4"	109-14	\$3.95
3/8"	3/8"	109-38	\$3.95
1/2"	1/2"	109-12	\$4.95
3/4"	3/4"	109-34	\$5.95
1"	1"	109-10	\$6.95
1-1/4"	1-1/4"	109-114	\$8.95
1-1/2"	1-1/2"	109-15	\$9.95
2"	2"	109-20	\$12.95



Hexagon Nipple

304 stainless steel

Size	Part Number	Price
1/4"	110-14	\$3.95
3/8"	110-38	\$3.95
1/2"	110-12	\$3.95
3/4"	110-34	\$3.95
1"	110-10	\$4.95
1-1/4"	110-114	\$5.95
1-1/2"	110-15	\$6.95
2"	110-20	\$7.95



Barrel Nipple

304 stainless steel

Size	Part Number	Price
3/4"	118-34	\$5.95
1"	118-10	\$6.95
1-1/2"	118-15	\$8.95
2"	118-20	\$10.95



Hexagon Caps

304 stainless steel

Size	Part Number	Price
3/4"	114-34	\$3.95
1"	114-10	\$3.95
1-1/2"	114-15	\$5.95
2"	114-20	\$6.95



Hexagon Plugs

304 stainless steel

Size	Part Number	Price
3/4"	115-34	\$3.95
1"	115-10	\$3.95
1-1/2"	115-15	\$5.95
2"	115-20	\$6.95
3"	115-30	\$12.95



Tee

304 stainless steel

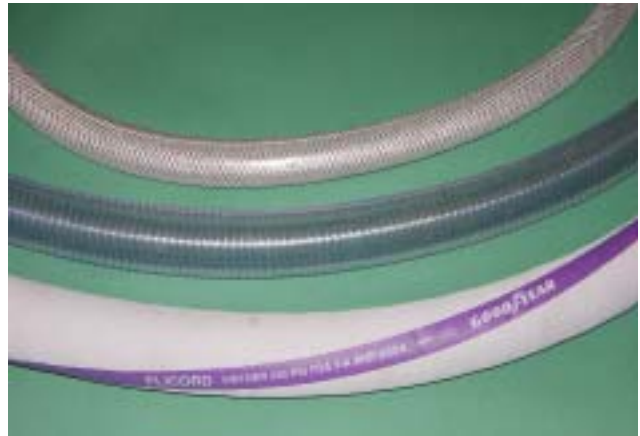
Size	Part Number	Price
3/4"	107-34	\$4.95
1"	107-10	\$6.95
1-1/2"	107-15	\$8.95
2"	107-20	\$12.95



Welding Nipple

304 stainless steel

Size	Part Number	Price
3/4"	112-34	\$3.95
1"	112-10	\$3.95
1-1/2"	112-15	\$4.95
2"	112-20	\$5.95



** Cut hose are non-returnable **

Goodyear Vintner hose has been designed to handle in-plant and or tank truck transfer of wine, beer, water and other non-oily liquid food stuffs.
 Handles vacuum up to 27" Hg.

Construction:

Tube: White chlorobutyl rubber (FDA, USDA, 3-A compliance)
 Reinforcement: Multiple textile piles / internal polyester monofilament Helix
 Cover: Grey Versigard wrapped cover, purple branding tape.
 Length: 100 ft. (or cut hose in any 10 ft. increment)
 Temperature: -30° F to 220° F (for steam cleaning)

Goodyear Vintner Hose

Catalog	Hose I.D.	Max. WP	Price per ft.	100 ft. coil
#79-10	1"	250 psi	\$8.95	\$7.95/ft
#79-15	1-1/2"	250 psi	\$10.75	\$9.75/ft
#79-20	2"	250 psi	\$12.75	\$11.75/ft
#79-30	3"	250 psi	\$18.50	\$17.50/ft

Goodyear Nutriflo suction & discharge hose for handling almost every type of dry bulk food material or liquid in gravity flow and vacuum service.

Construction:

Tube: Clear Pliovic (FDA, 3-A, USDA compliant).
 Reinforcement: High density pliovic helix
 Cover: Clear Pliovic
 Length: 100 ft. (or cut hose in any 10 ft. increment).
 Temperature: 15° F to 150° F

Goodyear Nutriflo Hose

Catalog	Hose I.D.	Max. WP	Price per ft.	100 ft coil
#792-10	1"	106 psi	\$3.50	\$3.00/ft
#792-15	1-1/2"	89 psi	\$3.95	\$3.50/ft
#792-20	2"	79 psi	\$5.50	\$5.00/ft
#792-30	3"	65 psi	\$7.75	\$7.00/ft
#792-40	4"	55 psi	\$14.50	\$13.00/ft

Goodyear Pliovic hose is clear reinforced tubing for the food & beverage industries. Designed for discharge, can't handle suction.

Construction:

Tube: Clear Pliovic conforms to FDA, 3-A & USDA.
 Reinforcement: Spiral synthetic yarn.
 Cover: Clear pliovic conforms to FDA. 3-A & USDA.
 Length: We will cut hose in any 10 ft. increment.
 Temperature: 15° F to 150° F

Goodyear Pliovic Hose

Catalog	Hose I.D.	Max. WP	Price per ft
#794-14	1/4"	250 psi	\$0.65
#794-38	3/8"	250 psi	\$0.75
#794-12	1/2"	200 psi	\$0.95
#794-34	3/4"	150 psi	\$1.45
#794-10	1"	125 psi	\$1.75

FDA Rubber Hose

These premium, reinforced hoses perform high-quality sanitary suction and discharge. FDA-approved EPDM rubber hoses are designed to transport beverage without imparting odor or taste. Machine fabricated assemblies of



hose with tri-clamp hose barb and sleeve in stainless steel, suitable for high temperature, high pressure and demanding sanitary applications. Custom cut length completely assembled and ready to use. 7 - 10 days lead time for custom cutting and machine assembly, not returnable.

- Internal Wall:
Seamless White EPDM
- Cover:
EPDM Rubber
(Abrasion and oil resistant)
- Reinforcement:
Two polyester spirals
with dual helix wire
- Temperature:
-40 F. to 300 F.

ID.	O.D.	Max. working Pressure	Catalog	Price per foot	2 Hose Barbs & sleeves assemblies
1/2"	0.931	150 psi	#795-12	\$15.00	add \$115.00
3/4"	1.182	150 psi	#795-34	\$18.00	add \$125.00
1"	1.500	150 psi	#795-10	\$22.00	add \$130.00
1-1/2"	2.040	150 psi	#795-15	\$26.00	add \$175.00
2"	2.600	150 psi	#795-20	\$27.00	add \$250.00
2-1/2"	3.173	150 psi	#795-25	\$32.00	add \$330.00
3"	3.718	150 psi	#795-30	\$41.00	add \$450.00
4"	4.781	150 psi	#795-40	\$45.00	add \$830.00



Spiral Reinforced PVC Suction Hose

PVC hose resists impact, crushing and kinking, meets FDA & 3A standards in suction & discharge applications. Lightweight and clear, allowing full visual contact with the flow of material inside. Smooth interior is easily cleaned and sanitized. Vacuum rating of 28 in./Hg. and tolerate temperature -40 F to 150 F.

ID.	O.D.	Work psi at 70 F	Burst psi at 70 F	Catalog	Price per foot
3/8"		N/A	N/A	#796-38	\$2.50
1/2"		N/A	N/A	#796-12	\$2.50
3/4"	15/16"	105 psi	315 psi	#796-34	\$3.25
1"	1-1/4"	100 psi	300 psi	#796-10	\$3.25
1-1/2"	1-13/16"	85 psi	255 psi	#796-15	\$3.75
2"	2-3/8"	80 psi	240 psi	#796-20	\$4.75
3"	3-7/16"	65 psi	195 psi	#796-30	\$9.75
4"	4-1/2"	50 psi	150 psi	#796-40	\$12.75

Hose Cleaning Sponge Ball

Cleaning ball will rub off debris build up inside beverage hose and pipes, will tolerate temperature up to 175 F (80 C) and service life is about 500 hours.

Catalog	Hose ID	Price
#306-10	1" Hose	\$3.00
#306-15	1-1/2" Hose	\$3.75
#306-20	2" Hose	\$4.75



Seitz Filter Sheets 40 cm x 40 cm

SEITZ, a specialist in depth filtration with decades of experience in the field of beverage filtration. SEITZ is synonymous with quality, reliability, economy and easy handling. Premium grade filter sheets made in Germany. Many generations of vintners trust Seitz in quality and reliability. Sold in case lot, available in pack of 25 mix and match into case lot.

Seitz	Particle retention	Catalog	Case of 100 sheet price
T-1000	10 - 25 micron	#3427	\$160.00
K-700	7 - 15 micron	#3430	\$125.00
K-300	6 - 12 micron	#3431	\$125.00
K-250	5 - 9 micron	#3428	\$125.00
K-200	4 - 6 micron	#3432	\$125.00
K-150	3 - 4 micron	#3433	\$125.00
K-100	1 - 4 micron	#3434	\$125.00
KS-80	0.8 - 2 micron	#3435	\$160.00
EK	0.5 - 0.7 micron	#3436	\$175.00

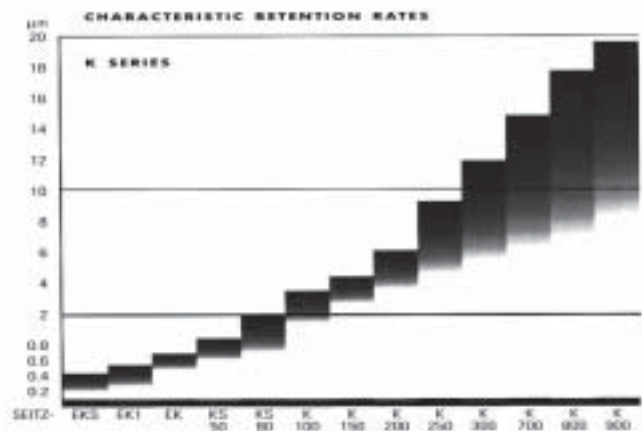
Seitz Filter Cartridges

The best membrane filter quality and reliability, imported from Germany.



SEITZ-MEMBRACart PSII

is final filter cartridge for bottling, with membrane made of polysulfone with high degree of reliability and long service life. The polysulfone membranes are hydrophilic. Upon contact with water the membranes wet completely. The excellent flux and output characteristics are not adversely affected by multiple steam sterilization. Cartridge manufacture is carried out under clean room conditions and made from FDA-listed materials. Polysulfone membrane reliably retains all organisms harmful to beverage, a fundamental requirement for microbiological stability and for maintaining the beverage quality. 0.45 micron absolute rating.



Catalog # 3471-1 30" cartridge, 0.45 micron Price \$425.00
 Catalog # 3471-2 10" cartridge, 0.45 micron Price \$149.00

SEITZ-PREcart PPII filter medium comprises various consecutively tighter, pleated poly-propylene layers. The final layer is classified as so-called bubble-point layers. The multiple layer construction yields a high total filtration area with fractionated retention characteristic. Flow rate for wine, juice and beer is 250 liters per hour. 1 micron absolute rating.

Catalog #3472-1 30" cartridge, 1 micron Price \$295.00

Econo Membrane Housing

Membrane housing in 30" length, made of 316 stainless steel with 1-1/2" tri-clamp connection and pipe mounting bracket. Filter housing is steam sterilizable or autoclavable. An affordable alternative for final filtration. Pressure rated 150 psi. Filter housing price does not include valves or pressure gauge.

Catalog #3405
 Price \$499.00



Filter Cartridges

Filter cartridges to provide high performance and cost effective solutions for wineries. All membrane filters are produced in a state of the art clean room facility to meet demanding beverage industry requirements. All cartridges provide optimal efficiency, dependable performance and long service life. Silicone O-rings are standard on all cartridges. All filter cartridges are re-usable, sterilizable, with autoclave @ 126 C degree for one hour or in hot water 203 F (95 C) for 10 minutes.



Recommended change-out pressure for disposal is 35 psi.

Absolute Rated Polyethersulfone Membrane Filter Cartridges

Benefits:

- 20 sq. ft. of membrane surface, high throughput, longer service, rated for beverage grade.
- Fixed pore construction eliminates dirt unloading when pressure changes.

Rating	Filter Length	Catalog	Price
0.2 micron	30"	#3475-2	\$279.00
0.45 micron	30"	#3475-4	\$259.00
0.2 micron	20"	#3475-8	\$169.00
0.2 micron	10"	#3475-9	\$95.00

Absolute Rated Polypropylene Filter Cartridges

Benefits:

- Absolute rated, efficiency at 99.98% available 1 micron and 5 micron
- Asymmetric pores for high dirt holding capacity
- High surface area, high flow rate and long service life
- Fixed Pore construction, eliminates dirt unloading when pressure changes.

Rating	Filter Length	Catalog	Price
1 micron	30"	#3474-2	\$105.00
5 micron	30"	#3474-4	\$105.00
10 micron	30"	#3474-6	\$105.00
1 micron	20"	#3474-8	\$69.00
1 micron	10"	#3474-9	\$37.00

Membrane cartridge P7 is standard stock. Housing connection can be special ordered to fit your housing, please provide connection code prior to order.

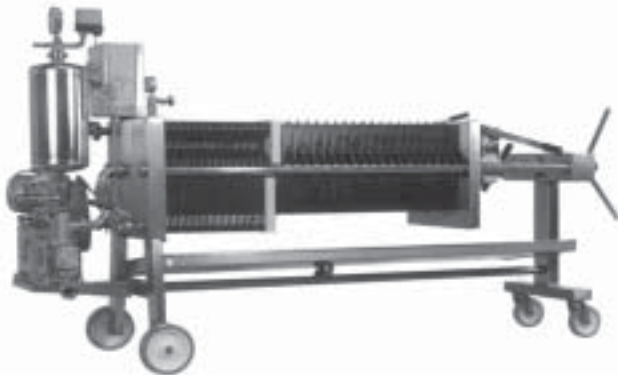




Cartridge Filter Housing

Membrane cartridge housing for sterile filtration, made of polished 316 stainless steel with pressure gauge, sample valve, pressure relief and discharge. Includes butterfly valves with tri-clamp connection and works with code 7 Seitz filter cartridge.

- #3407 30" Single Cartridge Filter Housing \$1795.00
- #3408 30" Three Cartridge Filter Housing \$2895.00
- #3409 30" Five Cartridge Filter Housing \$3295.00



Alfa Magic Combine Filter

Spadoni Lees Filter & Combine Filter

Lees filter with stainless steel frame mounted on wheel equipped with piston pump, and pressure buffer tank, water-proof electrical panel. Single phase, 220V. 60 hz. motor with manual hydraulic closing system. Alfa Magic Combine Filter equipped with double

filtration divider plates on plate & frame side filter. Filter is completely equipped and ready.

Model	Plate	Motor	Catalog	Price
Alfa Magic Combine Filter	20 D.E. + 30 Plates	1 h.p.	#3457	\$12,995.00
D.E. Filter Cloth			#3457C	\$45.00

Sil-Kleer Filter Aids

A unique filter aid made from volcanic rock with stringently controlled process of removing grit and other foreign substances. The resulting filter aid is an extremely pure, inert, white, light weight material having a unique interlocking structure with myriads of microscopic channels. It affords optimum flow rate and sparkling clarity and does not impart taste, odor or color to filtered liquids. Sil-kleer offers twice as much filtration, pound for pound, than diatomaceous earth. Users can realize substantial savings in filtration operations with a better filter aid at less cost. Sil-Kleer is safe, contains less than 0.1% silica (almost none) compared to D.E. with up to 60% silica. Sil-Kleer fits all pressure, vacuum and rotary filtration equipment with less equipment abrasion. Sil-Kleer can be easily disposed of, a non-hazardous waste. Ship via LTL common carrier, no UPS.

	<i>D.E. equivalent</i>	<i>Catalog</i>	<i>Price per bag</i>
Sil-Kleer 27-M	Standard Super Cell, Speed Flow	#3445	\$17.50 (40 lb. bag)
Sil-Kleer 23-S	Hyflo Super Cell Speed Plus	#3446	\$17.50 (34 lb. bag)



KAPPA Filter

40 x 40 cm Plate & Frame Filters. Made of 304 stainless steel and includes Noril plates which are steam sterilizable. Equipped with 1-1/2" tri-clamp butterfly valves and superior piping design. Pump is not included with the filter. Complete set up ready to use; includes all pressure gauges, sample valve, sight glass & gaskets. **Double filtration divider plate is installed on the filter and included in the price.**



Filter Model	Filtering Surface	Minimum Plate operation	Measurement	Catalog	Price
20 plates Plate & Frame Filter	3 sq. m.	10 plates	48"x26"x38"h.	#3410	\$4695.00
30 plates Plate & Frame Filter	4.6 sq. m.	24 plates	60"x26"x38"h.	#3411	\$5295.00
40 plates Plate & Frame Filter	6.2 sq. m.	32 plates	60"x26"x38"h.	#3412	\$5695.00
60 plates Plate & Frame Filter	9.5 sq. m.	52 plates	79"x28"x40"h.	#3413	\$6995.00



Spare parts:

Noril Plates	40 cm x 40 cm	#3416	\$69.00
Silicone Plates Gaskets		#3416A	\$5.00
Silicone End Plates Gaskets		#3416G	\$5.00

Pico Filter 20 x 20 cm Plate & Frame

Small filter, comes with 30 plates, size 20 x 20 cm. (8" square). Equipped with Noril filter plates that are steam sterilizable. Includes a 0.5 h.p. centrifugal pump, 110 v. 60 hz. Maximum pressure is 45 psi. Stainless steel frame on wheels, filters up to 300 gallons per hour. Double Filtration divider plates included. Weight 104 lbs., overall size: 34" L x 20" W x 26" H. Tri-clamp connection available, supply of two adaptors are additional \$50.00.



Catalog #3406 F-30 Plate & Frame Filter \$1595.00



Glycol Chiller



Deluxe chiller package with stainless steel pump and insulated poly tank, built into a single cabinet. Chiller built with York® condensing unit is designed for indoor or outdoor installations. Cabinet is fabricated of aluminum in beige color. Controls are 24 volts and pre-wired during manufacturing. These chillers are designed to properly cycle which allows the compressor to operate only as needed saving you money on operation expenses. Installation is simple requiring only water in, water out and electrical power connection with a single point connection. Chilllers are shipped complete, charged with refrigerant (R-22 is standard).

5 ton Glycol Chiller includes 1 hp pump and insulated 50 gal. tank.

Catalog #307-05 3-phase 5 ton Chiller Price \$7395.00
 Catalog #307-05A 1-phase 5 ton Chiller Price \$7795.00

10 ton Glycol Chiller includes 1-1/2 hp pump and insulated 75gal. tank.

Catalog #307-10 3-phase 10 ton Chiller Price \$11,695.00

15 ton Glycol Chiller includes 2 hp pump and insulated 75 gal. tank.

Catalog #307-15 3-phase 15 ton Chiller Price \$18,995.00

20 ton and up please call for quotes.

Air Cooled Glycol Chiller Standard Feature

Compressor

- High efficiency model
- Installed in chiller cabinet

Evaporator Coil

- High efficiency helical coil
- Copper inner tube
- Steel outer jacket
- Insulated
- Waterlines stubbed out of cabinet

Electrical

- Single point main power
- Designed for outdoor use
- Factory wired & tested

Control

- 24 volt control system
- Digital controller with adjustable set-points
- High pressure refrigerant safety above 400 psi, manual reset.
- Low pressure refrigerant safety with auto reset
- Water flow switch
- Low ambient fan cycle control

Cabinet

- Painted aluminum
- 1000 hour salt spray listed
- Access panel for convenience
- Steel hood

Listings

- ETL

Warranty

- 1 year limited parts

Manual Labeling Machines

BenchMate Labeling Machine

Manual labeling machine with a hand crank handle, robust and portable, will apply die cut & butt cut, roll format pressure sensitive labels to a wide range of cylindrical bottles. Works with front and back labels in a single roll, versatile and economical for small wineries. Required left hand oriented label. Minimum label size is 0.4" x 1" and maximum label size is 7" x 9". Labels with core size 1.38" or 2.96" and roll's outside diameter 12" Quick to set up, simple to use.

Catalog #3516 Price \$895.00



Race Junior Labeling Machine

Affordably priced with speed, accuracy and versatility. Roll diameter 8" maximum and label height 5" maximum. Accommodates bottle diameter 1/2" to 4.5" Capable of labeling bottles with slight taper. Front and back labels alternating on same roll with use of optional gap guide. Unibody construction out of Alcoa aluminum & stainless steel. This model will not label magnums or 3 liter bottles, Race standard labeling machine is available for large diameter bottles. Works with both left hand and right hand oriented labels in a single roll.

Catalog #3514 Price \$995.00

Race Standard Manual Labeling Machine

Manual operation to apply pressure sensitive label to any round container from 1" to 8" diameter. Handles label rolls up to 12" diameter. Easy adjustment to different size bottle. Back label position indicator is additional \$39.00 for front & back label application. Light weight, portable and compact design without any motor-driven parts.

Catalog #3512 Price \$1495.00

Race Taper Manual Labeling Machine

Same machine as Race Standard but roller spacing angle is adjustable to compensate for tapered bottles, so label is positioned straight on bottle.

Catalog #3511 Price \$1795.00



Semi-Automatic Labeling Machines

BenchMark Labeling Machine

Semi-automatic labeling machine, applies a single label, a full wrap-around label or a front and back label. Equipped with a mechanical sensor detects a wide range of labels accurately. Requires left hand oriented label. Minimum label size is 0.4" x 1" and maximum label size is 7" x 9". Labels with core size 1.38" or 2.96" and roll's outside diameter 12". Operated on single phase 110 V, 60hz.
 Catalog#3517 Price \$4780.00



Pro-line Labeling Machine

Semi-automatic for front and back labels, made of stainless steel. Machine works with round shape bottles, single phase 110 V. 60 Hz. with photo cell sensor to detect label. Requires left hand oriented labels and label side up, front and back labels in the same roll.

Production: 600 bottle / minute
 Bottle Diameter: Min 2.37" x Max. 4.73"
 Label size: Min. 1" x Max. 13.4"
 Max. label height 6.3"
 Core size: 3"
 Max. lable roll size: 12.6"

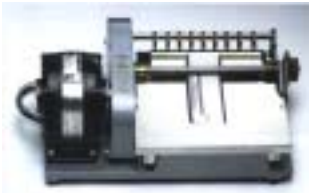
Catalog #3519 Price \$3495.00

Label Cementer

These machines allow you to apply water based adhesives to labels easily and economically. No blisters or wrinkles. Ideal for short run production. Coating head is removable for quick easy clean up.



Model: MS-6
 Roller Width: 6"
 Min. Label : 1/2" x 1-1/2"
 Max. Label : 5-3/4"
 Catalog #3521
 Price \$850.00



Model: MS-9
 Roller Width: 9"
 Min. Label : 1/2" x 1-1/2"
 Max. Label : 8-3/4"
 Catalog #3522
 Price \$1050.00

Food Grade Machine Oil

For winery equipment, crusher, press and bottling line

- Advantage:
- Conform to USDA HI & meet FDA regulation
 - Penetrate to loosen frozen nuts & bolts
 - Provides excellent lubricity
 - Colorless, odorless and not toxic
 - Non staining lubricant, spray upright or inverted.

Catalog #4555 Price \$7.95 / can (11 oz. can)

Food Grade Stainless Steel Cleaner

- Advantage:
- USDA C-1 rated, NSF Listed
 - Water based emulsion, clean & shine
 - Invisible coating resists fingerprints & watermarks
 - Resists Corrosion

Catalog #4556 Price \$6.95/can (14 oz. can)

Thief

Pyrex glass thief curved 1-1/4" OD x 24" length
 Catalog #2983-5 Price \$59.00

Stainless steel Thief curved with handle
 Tip & thumb airvent can be removed for cleaning, length 23".
 Catalog #2983-2 Price \$89.00



Erlenmeyer Flasks

Bomex brand, features heavy-duty rim to reduce chipping, white permanent graduations and a large marking square. Manufactured with uniform wall thickness which offers optimum balance between thermal shock resistance and mechanical strength.

Cat. No.	Capacity	Graduation range	Interval	Price
261-1	250 ml.	50 - 225 ml	25 ml	\$4.50
261-2	500 ml.	100 - 500 ml	50 ml	\$7.50
261-3	1000 ml.	250 - 1000 ml	50 ml	\$10.50

Cylinders

Graduated cylinders feature hexagonal bases for added stability with protective hexagonal bumper guards.



Cat. No.	Capacity	Graduation interval	Tolerance	Price
264-1	250 ml.	2.0 ml	1.00 ml	\$24.00
264-2	500 ml.	5.0 ml	2.00 ml	\$34.00
264-3	1000 ml.	10.0 ml	5.00 ml	\$59.00

Brix Hydrometers

Hydrometers are calibrated to show the percent of sucrose by weight at 20 C.

Cat. No.	Brix Range	Subdivision	Length (mm)	Price
266-12	0 - 12 Brix (Balling)	0.1	330	\$15.00
266-21	9 - 21 Brix (Balling)	0.1	330	\$15.00
266-31	19 - 31 Brix (Balling)	0.1	330	\$15.00
266-41	29 - 41 Brix (Balling)	0.1	330	\$15.00
266-51	39 - 51 Brix (Balling)	0.1	330	\$15.00
266-61	49 - 61 Brix (Balling)	0.1	330	\$15.00
266-12T	0-12 Brix with thermometer	0.1	370	\$28.00
266-21T	9-21 Brix with thermometer	0.1	370	\$28.00
266-31T	19-31 Brix with thermometer	0.1	370	\$28.00

Precision Proof & Tralles Hydrometer

0 - 200 proof range, length 310 mm Cat.#265-9 Price \$12.95

Alcohol Hydrometer

Single scaled hydrometers that have been made according to IRS specifications. Calibrated at 60 F.

Cat. No.	Proof Range	Subdivision	Length (mm)	Price
265-1	20 - 40	2	310	\$33.50
265-2	40 - 60	2	310	\$33.50
265-3	60 - 80	2	310	\$33.50
265-4	80 - 120	2	310	\$33.50



Distilling

Distillery Aroma III

Capacity 150 liter, equipped with ball shape hat, parallel mounted column with three rectification floors and amplifier. 8 tube stainless steel heat exchanger, stainless steel pipe cooling column. CIP system with spray balls in cooling column, pot still, hat and also in top & bottom column & amplifier. Two automatic thermostats for hearts and tails cuts. Discharge in 4" and flange for agitator. Water-bath insulation 1.18" and cover with stainless steel, electric agitator 93-112 rpm and agitator is included.

Steam System AROMA III \$25,950.00



Distillery LightLine III

Capacity of 150 liter, equipped with top mounted column with three rectification floors and amplifier. 8 tube stainless steel heat exchanger, stainless steel pipe cooling column. CIP system with spray balls in cooling column, pot still also in top and bottom column & amplifier. Two automatic thermostats for hearts and tails cuts. Discharge in 4" and flange for agitator. Water-bath insulation 1.18" and covered with stainless steel. Electric Agitator 93-112 RPM and agitator is included.

Steam System Distillery Light Line \$20,950.00

Add on options for Aroma III & Light Line III:

- **Booster pump for CIP system to increase pressure to 72 psi** **\$650.00**
- **Lighting system for pot & column** **\$1250.00**
- **Non-Tarnish coating of copper surface** **\$950.00**
- **Electrical control panel** **\$1100.00**
- **Discharge pump & pipe set up** **\$2300.00**
- **Natural gas, oil, wood fire box set up** **\$3300.00**



3667 Morgan Road, Ann Arbor, Michigan 48108

Tel 734.572.1300

Fax 734.572.0097

Toll-free tel 1.800.333.4288

Toll-free fax 1.800.500.7505

www.gwkent.com

email: info@gwkent.com